

# 5TH WHEEL STAR TRAILER



EMERALD GREEN  
IS THE NEW GREEN

100% Solar & Battery Powered Trucks, Trailers and Mobile Power

# SOLAR

## SPECS

**Trailer:** 45' long including tongue  
8'6" wide; 12'2" wide including extended pop-outs  
13'0" high

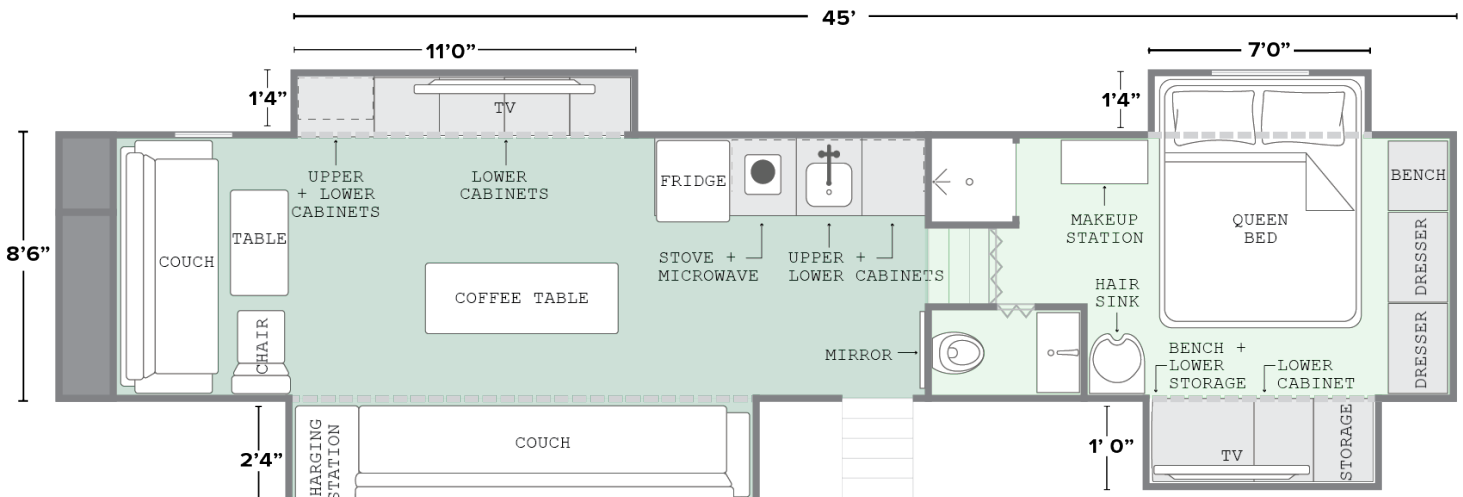
**Rooms:** 206 sqft Living room (exluding popouts)  
152 sqft bedroom (exluding popouts)

**Stairs:** 2'5" wide, extend 4' from trailer

**Battery Capacity:** 60 kWh  
**Solar Intake:** 5 kW  
**Charger Type:** 50A RV plug  
**Fresh Water Tank Size:** 75 gal.  
**Grey Water Tank Size:** n/a  
**Black Water Tank Size:** 75 gal.

## FEATURES

- Dual zone - mini-split HVAC
- Flat screen TV with streaming channels
- WiFi
- Full size refridgerator
- Microwave & Stove
- Private Bedroom
- Queen-size bed
- Hair & makeup station with dimmable lighting
- Full bathroom
- Full-length mirror



Some trailer layouts may vary.

# SINGLE ROOM STAR TRAILER



EMERALD GREEN  
IS THE NEW GREEN

100% Solar & Battery Powered Trucks, Trailers and Mobile Power

# SOLAR

## SPECS

**Trailer:** 35' long; 41' long including tongue  
8' wide; 10'4" wide including extended pop-outs  
12'6" high

**Rooms:** Living room 141 sqft, Bedroom 74 sqft  
(excluding pop-outs or bathroom)

**Stairs:** 2'5" wide, extend 4' from trailer

**Battery Capacity:** 60 kWh

**Solar Intake:** 5 kW

**Charger Type:** 50A RV plug

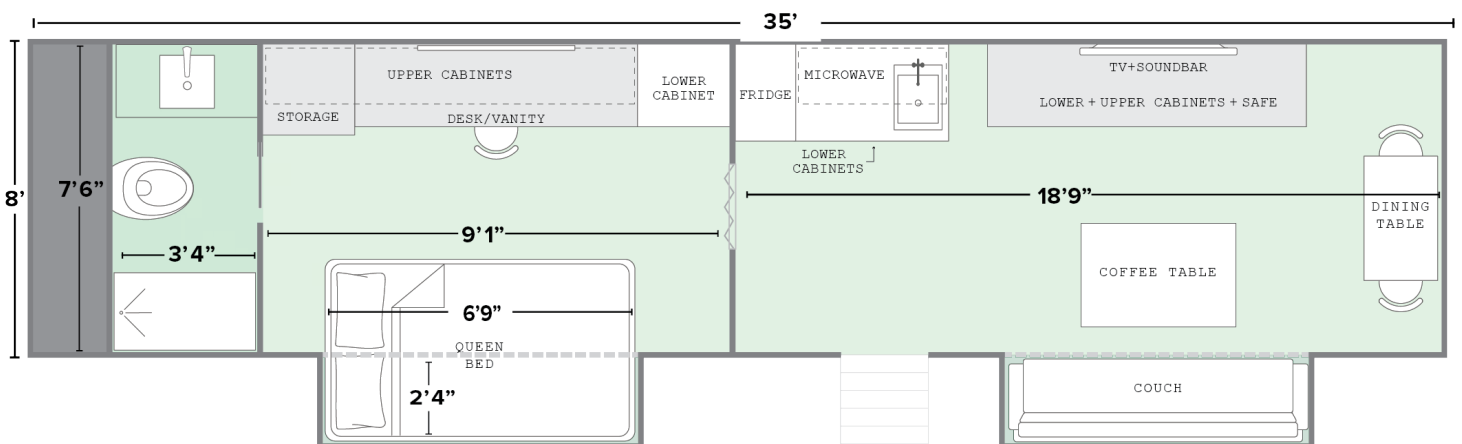
**Fresh Water Tank Size:** 75 gal.

**Grey Water Tank Size:** 48 gal.

**Black Water Tank Size:** 31 gal.

## FEATURES

- Dual zone - mini-split HVAC
- Flat screen TV with streaming channels
- WiFi
- Refrigerator
- Microwave
- Loveseat couch
- 2 seat dining area
- Full-length mirror
- Private bedroom
- Queen-size bed
- Hair & makeup station with dimmable lighting
- Full bathroom



Some trailer layouts may vary.

# 2 ROOM STAR TRAILER



100% Solar & Battery Powered Trucks, Trailers and Mobile Power

# SOLAR

## SPECS

**Trailer:** 35' long; 41' long including tongue  
8' wide; 10'4" wide including extended pop-outs  
12'6" high

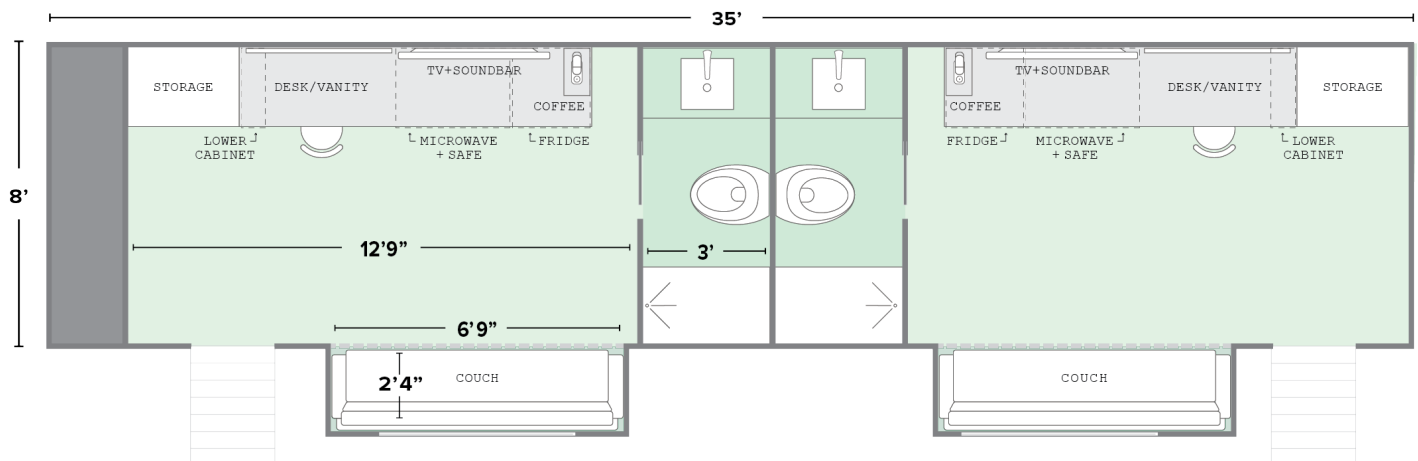
**Rooms:** 96 sqft each (excluding pop-outs or bathroom)

**Stairs:** 2'5" wide, extend 4' from trailer

**Battery Capacity:** 60 kWh  
**Solar Intake:** 5 kW  
**Charger Type:** 50A RV plug  
**Fresh Water Tank Size:** 75 gal.  
**Grey Water Tank Size:** 28 gal.  
**Black Water Tank Size:** 31 gal.

## FEATURES

- Dual zone - mini-split HVAC
- 43" 4K TV with streaming channels
- Wi-Fi
- Refrigerator
- Bluetooth sound system
- Microwave
- Personal safe
- Full bathroom



Some trailer layouts may vary.

# 3 ROOM STAR TRAILER



100% Solar & Battery Powered Trucks, Trailers and Mobile Power

# SOLAR

## SPECS

**Trailer:** 43' long; 49' long including tongue  
8' wide; 10'4" wide including extended pop-outs  
12'6" high

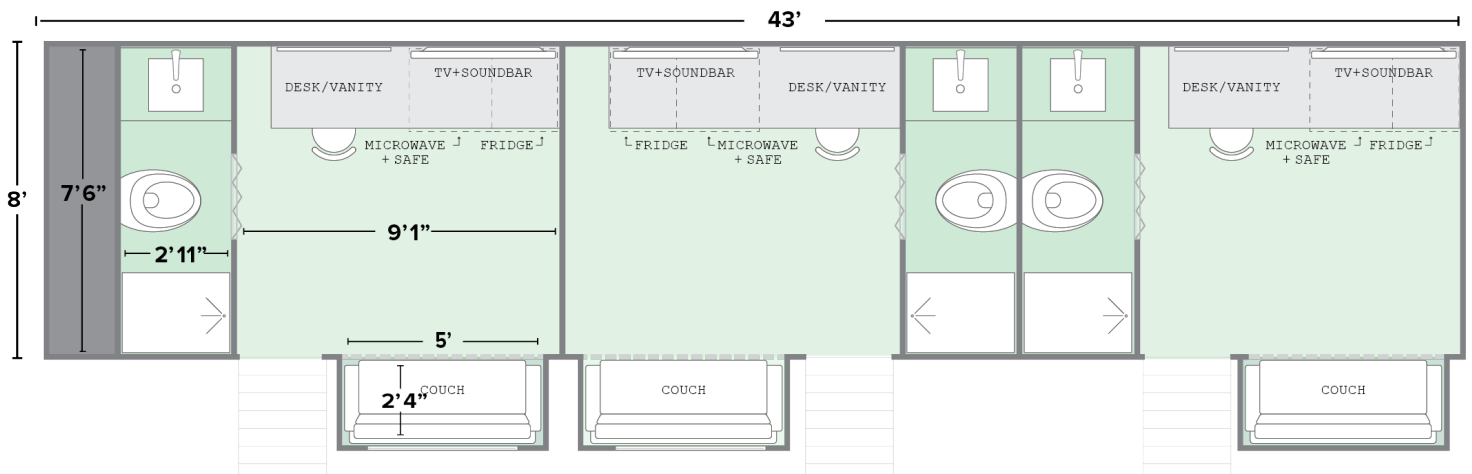
**Rooms:** 68 sqft each (excluding pop-outs or bathroom)

**Stairs:** 2'5" wide, extend 4' from trailer

**Battery Capacity:** 60 kWh  
**Solar Intake:** 5 kW  
**Charger Type:** 50A RV plug  
**Fresh Water Tank Size:** 75 gal.  
**Grey Water Tank Size:** 28 gal.  
**Black Water Tank Size:** 62 gal.

## FEATURES

- Three-zone - mini-split HVAC
- 43" 4K TV with streaming channels
- Wi-Fi
- Refrigerator
- Bluetooth sound system
- Microwave
- Personal safe
- Full bathroom



Some trailer layouts may vary.

# 8 STATION HAIR+MAKEUP

100% Solar & Battery Powered Trucks, Trailers and Mobile Power

# SOLAR

## SPECS

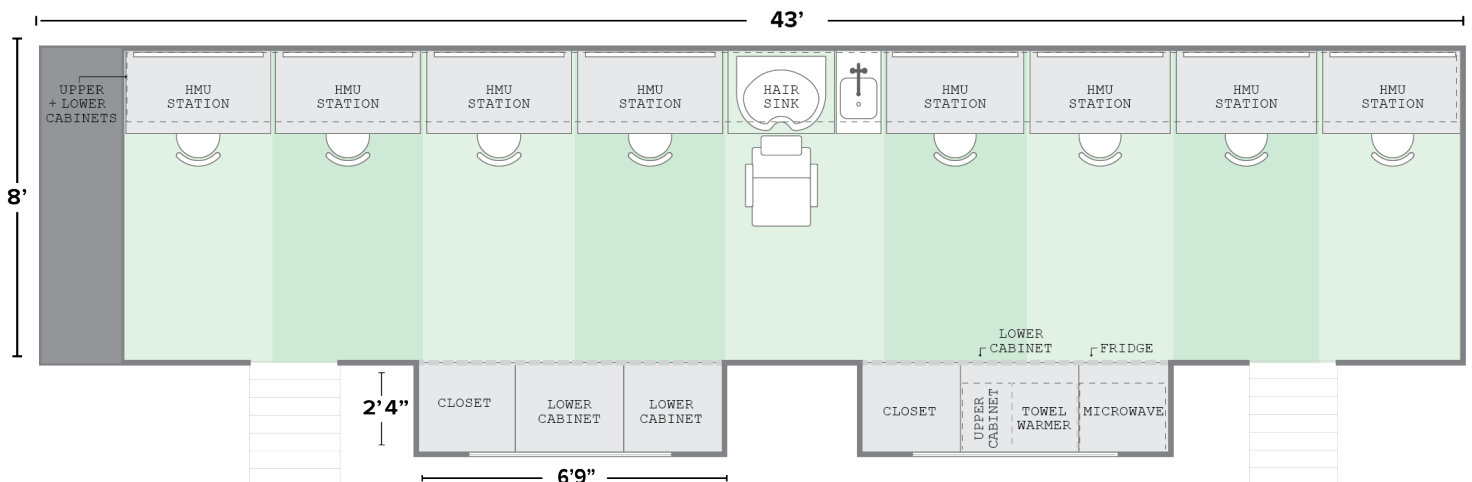
**Trailer:** 43' long; 49' long including tongue  
8' wide; 10'4" wide including extended pop-outs  
12'6" high

**Stairs:** 2'5" wide, extend 4' from trailer

**Battery Capacity:** 60 kWh  
**Solar Intake:** 5 kW  
**Charger Type:** 50A RV plug  
**Fresh Water Tank Size:** 75 gal.  
**Grey Water Tank Size:** 48 gal.  
**Black Water Tank Size:** n/a

## FEATURES

- Multi-zone mini-split HVAC
- Wi-Fi
- Wig storage
- Dimmable LED lighting
- Back-of-head spotlight
- Hair sink
- Refrigerator
- Microwave
- Towel warmer
- Espresso machine
- Bluetooth audio system



Some trailer layouts may vary.

# 10-STATION HAIR+MAKEUP

100% Solar & Battery Powered Trucks, Trailers and Mobile Power

# SOLAR

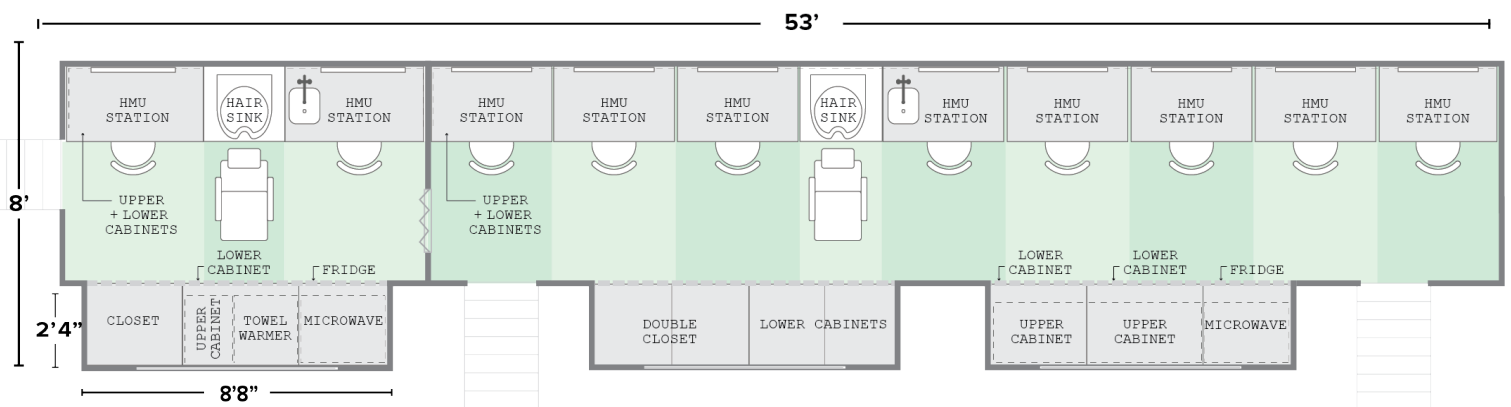
## SPECS

**Trailer:** 53' long  
8' wide; 10'4" wide including extended pop-outs  
13'5" high  
**Stairs:** 2'5" wide, extend 4' from trailer

**Battery Capacity:** 140 kWh  
**Solar Intake:** 7.5 kW  
**Charger Type:** 100A 4 pin  
**Fresh Water Tank Size:** 210 gal.  
**Grey Water Tank Size:** 210 gal.  
**Black Water Tank Size:** n/a

## FEATURES

- Multi-zone mini-split HVAC
- Wi-Fi
- Cabinet and wig storage
- LED lighting with dimming capabilities
- Back-of-head spotlight
- Hair sink
- Refrigerator
- Microwave
- Towel warmer
- Espresso machine
- Bluetooth audio system



Some trailer layouts may vary.

# WARDROBE



EMERALD GREEN  
IS THE NEW GREEN

100% Solar & Battery Powered Trucks, Trailers and Mobile Power

# SOLAR

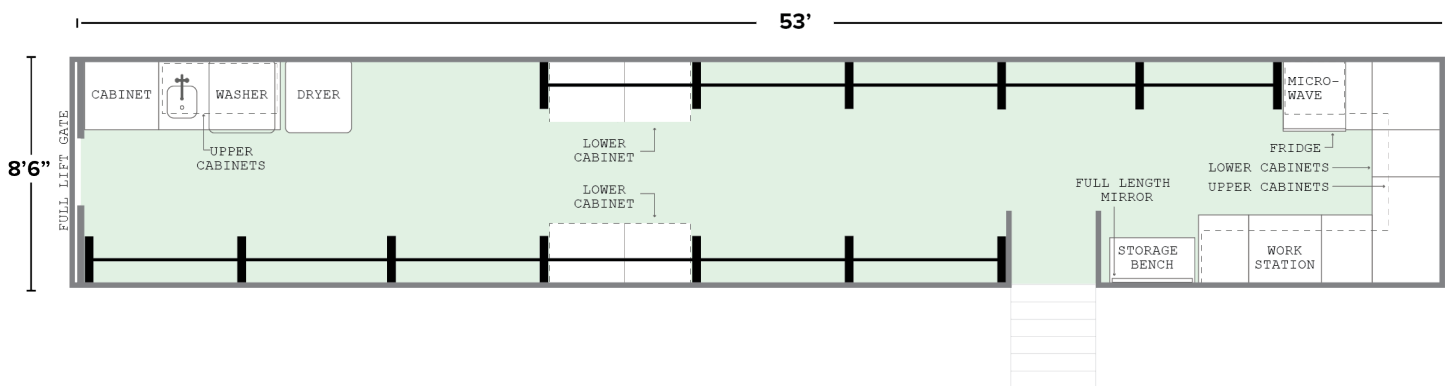
## SPECS

**Trailer:** 53' long  
8'6" wide  
13'5" high  
**Stairs:** 2'5" wide, extend 4' from trailer

**Battery Capacity:** 80 kWh  
**Solar Intake:** 7.5 kW  
**Charger Type:** 100A 4 pin  
**Fresh Water Tank Size:** 210 gal.  
**Grey Water Tank Size:** 210 gal.  
**Black Water Tank Size:** n/a

## FEATURES

- Full-length adjustable multi-level bar system
- Dual-zone climate control
- Refrigerator & microwave
- Full-size washer and dryer
- Wi-Fi
- Deep laundry sink
- Workstation



Some trailer layouts may vary.

# HONEYWAGON



100% Solar & Battery Powered Trucks, Trailers and Mobile Power

# SOLAR

## SPECS

**Trailer:** 53' long  
8'6" wide  
13'5" high

**Rooms:** Front office 78 sqft, All others 38 sqft

**Stairs:** 2'5" wide, extend 4' from trailer

**Battery Capacity:** 80 kWh

**Solar Intake:** 7.5 kW

**Charger Type:** 100A 4 pin

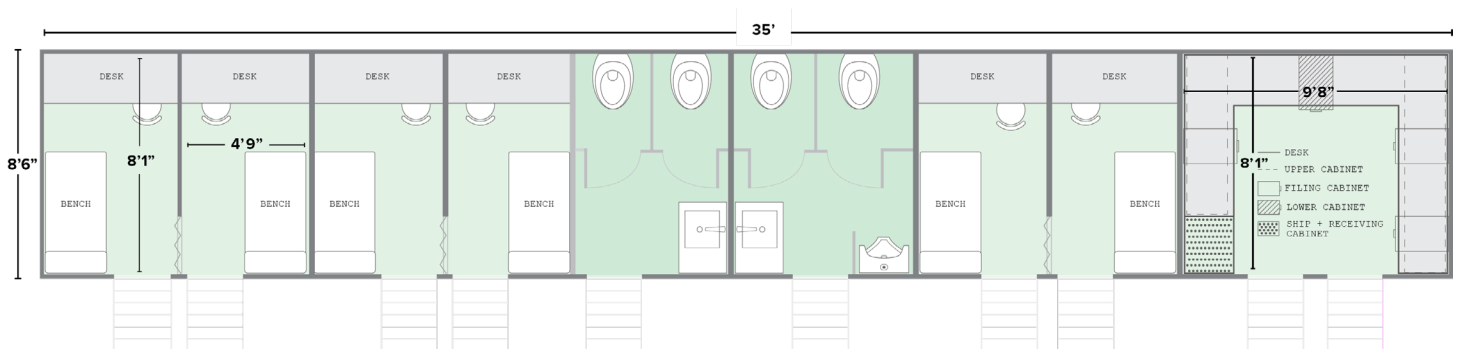
**Fresh Water Tank Size:** 210 gal.

**Grey Water Tank Size:** n/a

**Black Water Tank Size:** 420 gal.

## FEATURES

- 8 offices
- 6 zone multi-split HVACs
- Multi-stall restrooms
- Wi-Fi



Some trailer layouts may vary.

# OFFICE

100% Solar & Battery Powered Trucks, Trailers and Mobile Power

# SOLAR

## SPECS

**Trailer:** 35' long; 41' long including tongue  
8' wide; 10'4" wide including extended pop-outs  
12'6" high

**Rooms:** 121 sqft each (excluding pop-outs)

**Stairs:** 2'5" wide, extend 4' from trailer

**Battery Capacity:** 60 kWh

**Solar Intake:** 5 kW

**Charger Type:** 50A RV plug

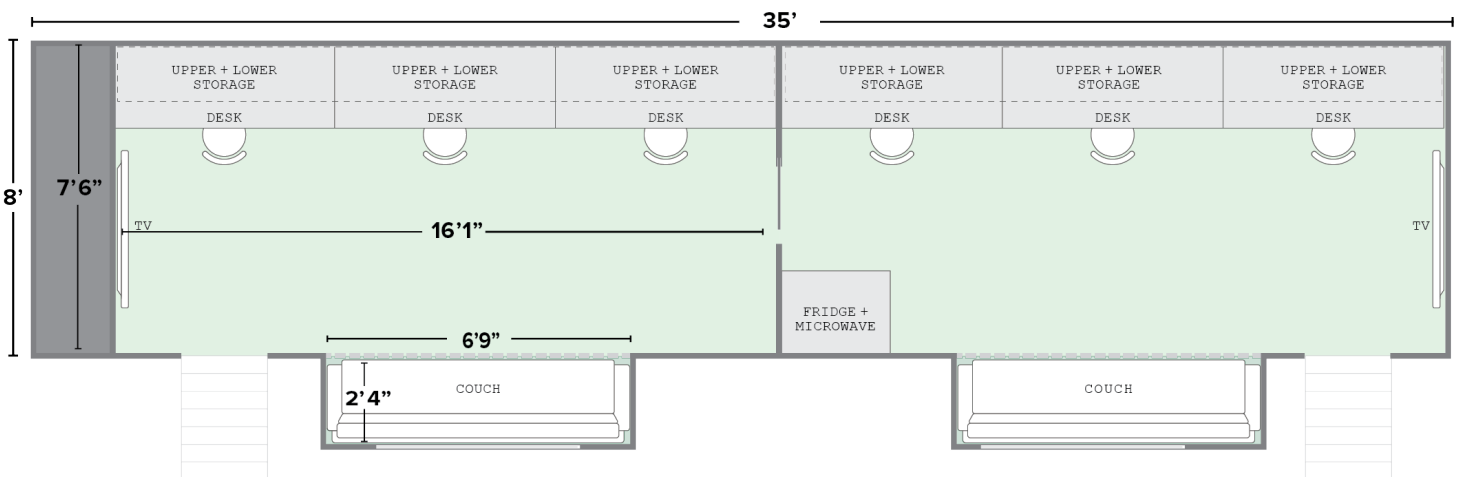
**Fresh Water Tank Size:** n/a

**Grey Water Tank Size:** n/a

**Black Water Tank Size:** n/a

## FEATURES

- Dual zone - mini-split HVAC
- 43" 4K TV with streaming channels
- Wi-Fi
- Refrigerator
- Microwave



Some trailer layouts may vary.

# SOLAR CAMERA TRUCK



EMERALD GREEN  
IS THE NEW GREEN

100% Solar & Battery Powered Trucks, Trailers and Mobile Power

# SOLAR

## SPECS

### Truck

Box - 30'L x 8.5'W x 13.4'H  
GVWR - 52,350 lbs.

### Features

Hydraulic liftgate  
Rear back-up camera  
Nitrogen tank hookups  
LED dome lights  
Adjustable/removeable shelving  
Mini-split HVAC

### Energy Generation

PV Panels Used: ADiON PV540 G1 (540W)  
Output: 3.2 kW  
Safety: UL 61730-1, UL 61730-2 certified

### Energy Storage

Batteries Used: ADiON Li48 (Lithium Iron Phosphate LiFePo4)  
Storage Capacity: 40kWh  
Safety: UL 1973 certified

### Inverter

Inverters Used: Sol-Ark 15K  
Safety: UL 1741, UL 1699B certified



# EPS 360 POWER STATION



EMERALD GREEN  
IS THE NEW GREEN

100% Solar & Battery Powered Trucks, Trailers and Mobile Power

# SOLAR

## SPECS

### Trailer

26' long x 8'6" wide x 12' high  
25,000 lb

### Output Power

Continuous Output: 96kW (400 amp)  
Peak Power (10 sec): 150kW

### Output Voltage

3-phase  
Output voltage: 208V AC  
Single Phase, Pure Sine Wave  
Output Voltage: 120/240V AC

### Energy Generation

PV Panels Used: ADiON PV540 G1 (540W)  
Output: 10 kW  
Safety: UL 61730-1, UL 61730-2 certified

### Energy Storage

Batteries Used: ADiON Li48 (Lithium Iron Phosphate LiFePo4)  
Storage Capacity: 360 kWh  
Safety: UL 1973 certified

### Inverter

Inverters Used: Sol-Ark 15K  
Safety: UL 1741, UL 1699B certified

### Charging

Charge Time w/ Supercharger: From 20% to 100%  
rapid 150 amp charge, 8 hrs  
Charge Capacity: 15 kW 50 amp - 28 kW 100 amp  
Lifecycle (80% capacity): 6,000 cycles



917.922.4122

INFO@EMERALDTRAILERS.COM

POWERED BY 

In Partnership  
With



# MP 600/75 POWER SUPPLY



100% Solar & Battery Powered Trucks, Trailers and Mobile Power

## SPECS

### Trailer

163" long x 69" wide x 79" high

### Output Power

Usable energy: 530 kWh

Max Current: 100A

### Continuous Power

40 kW @ 480V 3-phase

35 kW @ 208V 3-phase

24 kW @ 240V Single Phase

### Peak Power

75 kW @ 480V 3-phase

35 kW @ 208V 3-phase

24 kW @ 240V Single Phase

### Output Voltage

3-phase output voltage 480/208V AC

Single phase 120/240V AC

### Energy Storage

Batteries: Lithium Iron Phosphate (LiFePo4)

Storage Capacity: 600 kWh (540 kWh usable)

Safety: UL 1973 certified

### Charging

DC charge time: ~13 hrs



917.922.4122

INFO@EMERALDTRAILERS.COM



In Partnership  
With

